



**Worldwide Strategic Weather  
for Flight Decks and Electronic Flight Bags**

# WINN™ Graphical Weather

The Honeywell Global Data Center provides business jet operators with real time graphical weather services.

## Epic WINN

### Datalink

NEXRAD\*, Satellite Cloud Heights, and Winds Aloft

### XM

NEXRAD\*, Satellite Cloud Height, Winds Aloft, Echo Top & Storm Movement, AIRMETs, SIGMETs, Temporary Flight Restrictions (TFRs), Lightning, CONUS radar coverage mask, Clear Air Turbulence (CAT), Storm Cell Info Tracking (SCIT)

## CDS/R

### Datalink

NEXRAD\*, Satellite Cloud Heights, and Winds Aloft

### XM

NEXRAD\*, Satellite Cloud Height, Winds Aloft, Echo Top & Storm Movement, AIRMETs, SIGMETs, Temporary Flight Restrictions (TFRs), Lightning, CONUS radar coverage mask, Clear Air Turbulence (CAT), Storm Cell Info Tracking (SCIT)

## Electronic Flight Bag (EFB)

### Internet

NEXRAD\*, Satellite (Cloud Height), Winds Aloft, Temperatures Aloft, Weather Depiction

### XM

NEXRAD, Satellite (Cloud Height), Winds Aloft, Echo Top, AIRMETs (plotable), SIGMETs (plotable), Temporary Flight Restrictions (TFRs), Lightning, CONUS radar coverage mask, Clear Air Turbulence (CAT), Storm Cell Info Tracking (SCIT), Vertical Winds view, Vertical CAT view, Terminal Area Forecasts (TAFs), METARs (w/airports), Animated NEXRAD (Replay), Animated Satellite Cloud Height (Replay), Animated CAT (Replay), Surface Analysis

## Benefits

- Enhanced safety and situational awareness
- User interface designed for quick and easy access
- Honeywell's "24/7" customer service and support
- Real time graphical weather solution
- Cost effective

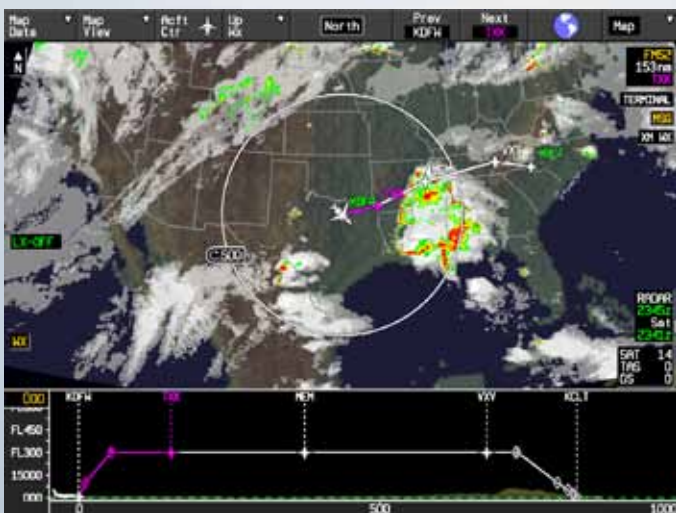
## APEX

### Features

- Worldwide graphical weather uplink solutions Graphically displays weather features
- Functions with existing communications and avionics systems

### XM

NEXRAD\*, Satellite Cloud Height, Winds Aloft, Echo Top & Storm Movement, AIRMETs, SIGMETs, Temporary Flight Restrictions (TFRs), Lightning, CONUS radar coverage mask, Clear Air Turbulence (CAT), Storm Cell Info Tracking (SCIT)



# AFIS® Graphical Weather for the NZ-2000 FMS

## Global Data Center Services

The Honeywell GDC provides a complete suite of graphical weather products for the NZ-2000 FMS / AFIS DMU. AFIS graphical weather products can be uplinked via VHF datalink or SATCOM based on location and aircraft equipage. Utilize the combination of your NZ-2000 FMS and GDC graphical weather to enhance situational awareness and maximize operational efficiencies.

## Proline 21

### Datalink

NEXRAD\*, Satellite (Cloud Height), Winds Aloft, Temperatures Aloft, Weather Depiction



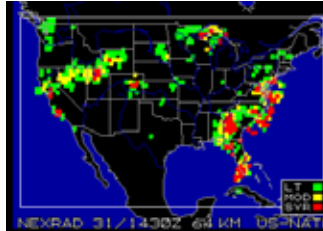
AFIS DMU



NZ-2000



CD-820



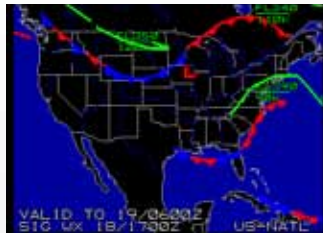
U.S. National/Regional NEXRAD

- Cell Tops with movement
- 64 KM - 8 KM grid resolution
- All charts time-stamped



Area NEXRAD

- U.S. National
- U.S. Regional
- 200 NM scale
- 100 NM scale



Significant Weather

- U.S. National
- System fronts
- Jet stream location, altitude and speed
- High and low pressure areas



Significant Weather

- Hurricane plotting
- Icing
- National convection weather forecast
- Turbulence



Winds Aloft

- United States
- International
- Surface to approximately FL530



CATMET Categorial METAR

- U.S. National
- U.S. Regional
- Airports color-coded to depict VFR/IFR
- Similar to weather depiction chart, but updated hourly



**Honeywell Global Data Center**

15001 NE 36th Street

Redmond, WA 98052

North America Toll-Free: 1.888.634.3330

Outside USA: +1.425.885.8100

[www.mygdc.com](http://www.mygdc.com)

[www.honeywell.com](http://www.honeywell.com)

A60-0861-000-006

May 2012

© 2012 Honeywell International Inc.

**Honeywell**